



Construct Innovate

Index Day 27 March 2025

1

Enterprise Ireland structure

2

The supports to the construction industry

3

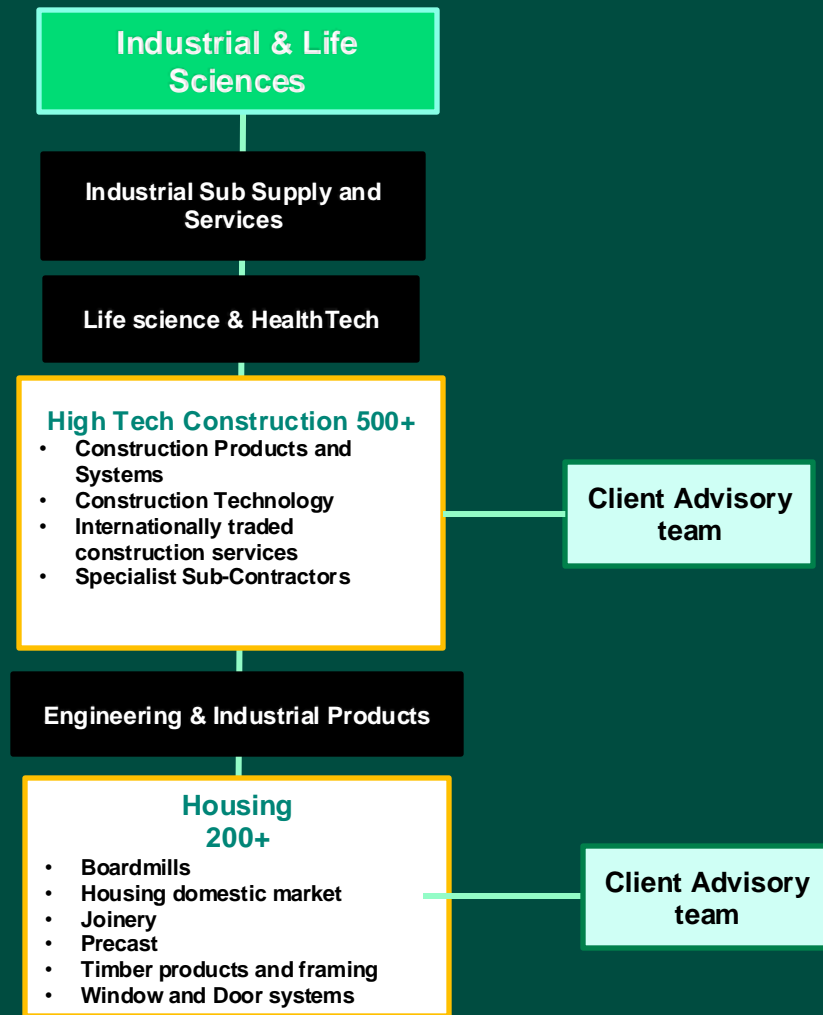
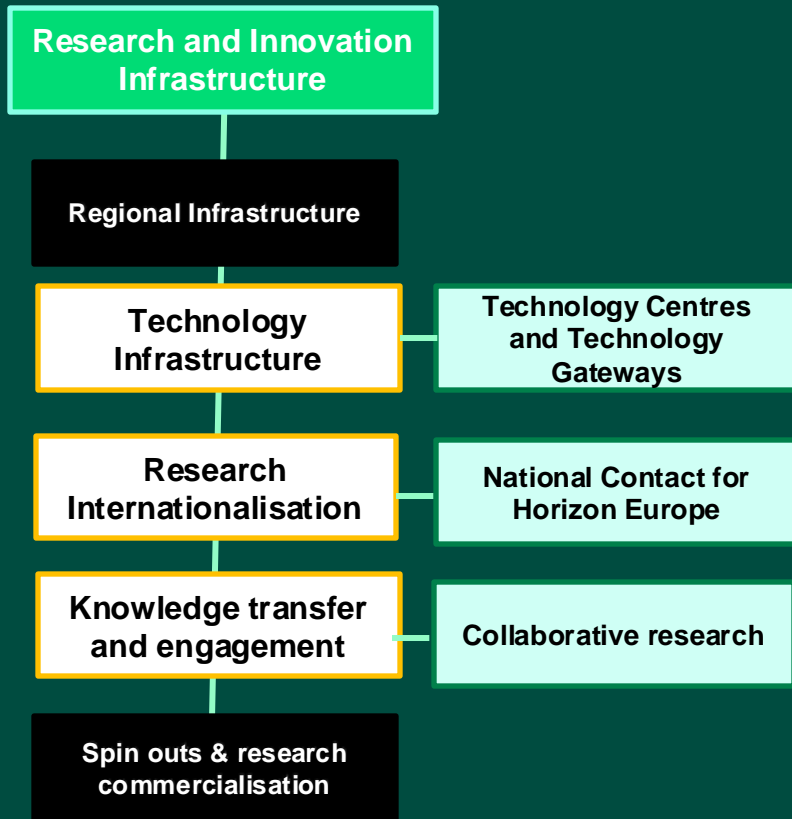
Points of contact

Enterprise Ireland

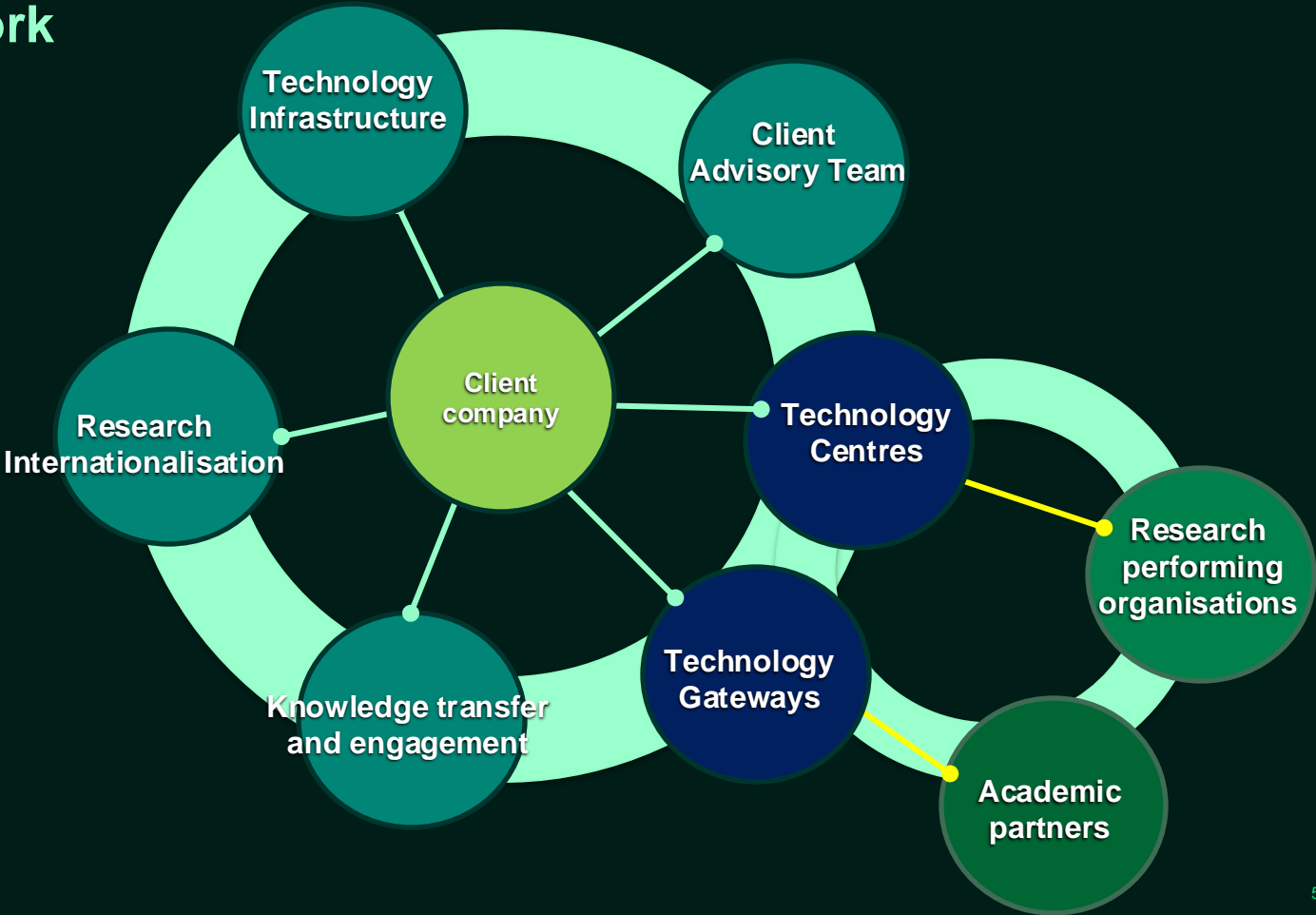
Organisational structure

1

Organisational structure



Support network



**The supports available
to the companies**

2

Supports

Research, Innovation & Infrastructure Working with Construct Innovate, Technology Centre

Type of support	What is it for	What can it be used for
Innovation Voucher	SMEs can build connections with Ireland and Northern Ireland's publicly funded Knowledge Providers (i.e. higher education institutes, public research bodies) to explore business problems and uncover opportunities	€10,000 worth of time with an expert, third-level researcher to help you develop an idea or product, or solve a business or technical challenge. SMEs may avail of a maximum of four vouchers (3 standard, 1 co-funded).
Innovation Partnership Programme	The Innovation Partnership Programme is a hugely impactful venture which encourages Irish-based companies to work with Irish research institutes for mutually beneficial engagement, creating an innovative ecosystem that delivers impactful change	80% of up the cost of research
Work ready graduate programme	Work Ready Graduate Programme (WRGP) is designed to allow Technology Centres to help their member companies tackle the challenge of recruiting graduates with a combination of experience in Research, Development and Innovation and the softer skills needed to work effectively within the companies	Progress / close out of R&D projects, Develop new solutions and offerings. The costs of employment, mentoring and training for the graduate are split between company and grant.

Type of support	What is it for	What can it be used for
Key Manager Support	This support can help companies attract the right people to drive change in business, by helping with the salary cost of a 'Key Manager' who possesses skills that are critical to enabling business growth.	Grant may cover salary costs of up to €150,000 for a full-time role.
Digital Discovery	Digital Discovery grant is to incentivise and support companies to introduce new digital technologies and solutions into their operations. Implementing digital technologies in your business can lead to greater efficiency, improved customer experiences, better decision-making, and an enhanced ability to bring better and more diverse products to market	80% of up to €5,000
Digital Process Innovation	Embedding digital technologies across your business can increase efficiency, improve productivity, and give you a competitive edge.	For SMEs and Large Companies, 50% of the eligible costs, up to a maximum grant of €150,000.
Climate Action Voucher	Independent training or advisory services to develop an initial sustainability action plan	€1,800
Cyber Security Review Grant	In collaboration with the National Cyber Security Centre, offers the Cyber Security Review. This initiative provides access to cyber security experts who will conduct an independent review of your company's cyber security status, identify vulnerabilities, and develop a clear roadmap enhance security measures.	80% of up to €3,000

PhDStart

Supporting EI client companies to recruit research talent to drive innovation

Grant is provided on a 50:50 co-funding basis €62,000 over the two years.

Advantages of recruiting a PhD graduate.

- They are innovators
- They know how to find answers
- Technical writing expertise
- Modern PhDs learn transferable skills such as data analysis, public engagement, project management or business, economics and finance.
- Mentorship/Teaching
- Network – PhDs often have extensive networks
- IP ownership

At a glance:

- Embed innovative PhD graduate capability into your R&D and innovation strategy.
- Hire company matched Research Talent.
- Receive financial support (€62,000) to support the graduates salary for two years.

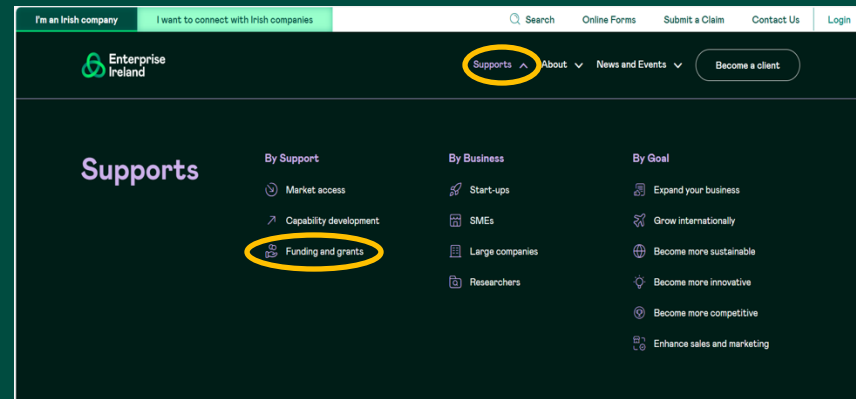
Points of contact

3

MAKE THE CONNECTION



www.enterprise-ireland.com



Maria Salto

Maria.SaltoGaldon@enterprise-ireland.com

Brian Murphy

brian.murphy@enterprise-ireland.com

Knowledge Transfer and Engagement Team

Research, innovation & enabling infrastructure Division

Gary Greenan MRICS, MCSI

Programme Manager

Technology Infrastructure Team

Research, innovation & enabling infrastructure Division

gary.greenan@enterprise-ireland.com

